

2026

AFM / EN

A mountain biker wearing a white helmet and a light-colored t-shirt is performing a wheelie on a dirt trail in a forest. The bike is balanced on its rear wheel, and the rider is leaning forward. The background is a dense forest with tall trees and green foliage. The overall scene is dynamic and action-oriented.

MTB NEWS

SCHWALBE 

CONTENTS

INFO

- 3** Editorial
 - 4** Range
 - 6** Constructions
 - 8** Compounds
 - 9** Label
 - 10** Radial
-

TIRES

- 13** Romy
- 14** Magic Mary
- 15** Tacky Chan
- 15** Shredda F
- 16** Shredda R
- 16** Albert
- 17** Eddy Current
- 17** Nobby Nic
- 18** Rick



SCHWALBE RANGE

OUR NEW MTB PRODUCTS FOR 2026

In this brochure, we present the new products from the Schwalbe MTB range for the 2026 product year. We are making some major changes, which we would like to inform you about in advance.

As part of our range restructuring, there will only be two different product lines at Schwalbe in future: the Schwalbe line and the Schwalbe **PRO** Linie. The focus is on Schwalbe and the product, with specifications customized to the respective application and where **PRO** stands for the maximum performance version. Further details on this can be found on page 4.

At the same time, we at Schwalbe have decided to streamline our range. With the release of our new tires at Sea Otter 2026, we are reducing our MTB portfolio by 30%. Our aim

is to make it quicker and easier for you to find the best tire for your needs. This will bring about fundamental changes in Schwalbe's MTB tire sector: we are reducing the number of carcass constructions in our tires from five to three, and adding various models with radial carcasses. In the first step, all trail and gravity tires will be affected by the changes, with XC tires following in 2027.

We are also adjusting our compounds - this mainly affects the names. The term ADDIX will be discontinued, and the Speedgrip compound will now be called MID. Last but not least, we are launching further innovations on the market: a newly developed Ultra Soft compound, a further improved Gravity **PRO** construction, and the completely redesigned Romy tire model.

Enjoy reading!

All new MTB products can be ordered from now on, and we will release the new products at the Sea Otter Festival in April 2026.



RANGE REALIGNMENT

PRO LINE AND SCHWALBE LINE

In the future, the range will no longer be divided into Active, Performance, and Evolution Line. The focus will be on Schwalbe and the product. In addition to the “Schwalbe Line” (which replaces the Active and Performance Lines), there will only be one step up: the “Schwalbe PRO” Line.

“PRO” stands for maximum performance for each specific application (and thus replaces the previous Evolution Line).

- Transition
- Models
- New Models
- New Labels
- Discontinued items
- Alternative model

2026	Sea Otter	Eurobike	
Nobby Nic	partially Romy		
Hans Dampf	Romy		
Tacky Chan	+ Radial		
Big Betty	Alternative: Albert, Tacky Chan		
Magic Mary			
Albert			
Eddy Current Front	Alternative: Albert, Magic Mary		
Eddy Current Rear	+ Radial		
Shredda			

OUR PHASED-OUT MODELS AND THE SUITABLE ALTERNATIVES

At Schwalbe, we constantly develop our products so everybody always gets the best for their bike. Some models, such as Big Betty or Hans Dampf, are taking a well-earned retirement – but of course, we already have the ideal successors ready.

PHASED-OUT MODELS

ALTERNATIVE



HANS DAMPF

The all-rounder for all-mountain and enduro



BIG BETTY

The rear tire complement to Magic Mary



EDDY CURRENT FRONT

The “indestructible” tire for e-MTB



ROMY

The new trail tire for maximum fun, more grip and control



ALBERT

More closed tread for hard ground and when durability and rolling resistance are the focus



ALBERT

More closed tread for hard ground and when durability and rolling resistance are the focus



TACKY CHAN

More open tread for loose ground when speed and precision are the focus



MAGIC MARY

The legendary downhill and enduro tire with a forgiving tread pattern for all terrains.

WE HAVE TIDIED UP OUR MTB CONSTRUCTIONS

CLEARER AND SIMPLER

- Super Downhill and Super Gravity merge into the new **GRAVITY PRO construction** (also available as the more affordable GRAVITY construction in the Schwalbe line)
- Super Race becomes the **RACE PRO construction**. RACE PRO also replaces the previous Super Ground construction
- Super Trail becomes **TRAIL PRO construction** (also available as the more affordable TRAIL construction in the Schwalbe line)—only the name changes here

This streamlining will make finding the right tire much easier in the future. Depending on the desired application, you start by choosing **GRAVITY, RACE or TRAIL** and from there you can find the model that suits you best.

ADDITIONAL ADJUSTMENTS WILL BE MADE

- Bike Park becomes **GRAVITY**
- Double Defense becomes **TRAIL**—but only for GRAVITY profiles (Magic Mary & Tacky Chan)

Our further developed GRAVITY PRO construction:

- Developed in the Enduro and DH World Cup since 2021
- Optimized for radial, but also available as a conventional diagonal tire
- Stability and puncture protection: construction with 6 layers under the tread and 4 layers on the sidewall
- Plus our proven fabric-reinforced Apex puncture protection
- Additional burping protection through optimized use of materials

GRAVITY PRO CONSTRUCTION

- 1 6 layers under the tread
- 2 4 layers on the sidewall
- 3 Our proven fabric-reinforced Apex puncture protection
- 4 Additional burping protection through optimized use of materials on the tire core
- 5 Additional sidewall protection through Snakeskin



TACKY CHAN

MY2027

BIKEPARK

**SUPER
DOWNHILL**

**SUPER
GRAVITY**

GRAVITY

Magic Mary
Tacky Chan

GRAVITY PRO

Albert (Radial)
Eddy Current (Radial)
Magic Mary (Radial)
Romy (Radial)
Shredda F & R (Radial)
Tacky Chan (Radial)

**DOUBLE
DEFENSE**

**SUPER
TRAIL**

TRAIL

Magic Mary
Nobby Nic
Romy
Tacky Chan

TRAIL PRO

Albert (Radial)
Magic Mary (Radial)
Nobby Nic
Romy (Radial)
Tacky Chan (Radial)

**SUPER
RACE**

**SUPER
GROUND**

RACE PRO

Romy
Tacky Chan

XC tires will
follow in 2027

OUR COMPOUNDS ALSO GET AN UPDATE:

ADDIX DROPPED

The term Addix will no longer be used in the MTB sector - the compounds themselves remain unchanged or have been further improved. Our Compound Mid (formerly Speedgrip) is getting a new name and has been optimized for its specific application.

ULTRA SOFT

The completely new Ultra Soft compound was developed by us in the Downhill World Cup.

The advantages:

- 50% more damping than the previous Ultra Soft compound
- Increased wet grip for poor conditions: Amaury Pierron won the World Cup in Lets Gets in 2024 with a lead of over 6 seconds
- Despite the significant performance advantages, it still offers high durability

ALSO IN THE SCHWALBE LINE

Also new from 2026: Our high-quality compounds are now also used in the Schwalbe Line, tailored to the respective area of application.

FURTHER COMPOUND CHANGES

- All **PRO tires** are produced with fair trade natural rubber (Fair Rubber)
- The Green Compound is now also being used in MTB tires from the Schwalbe line (A rubber compound that is made exclusively from polymers derived from renewable and recycled raw materials)



ADDIX SPEED → SPEED

The compound for XC race specialists: it catapults our XC tires into a new performance dimension.

ADDIX SPEEDGRIP → MID

Previously known as ADDIX Speedgrip, our universal compound has been renamed Mid. It has the widest range of applications: ideal for XC, AM, and trail riding.

ADDIX SOFT → SOFT

Bridges many disciplines: in the enduro and downhill world, in all-mountain and trail riding.

ADDIX ULTRA SOFT → ULTRA SOFT

Newly developed, with even more damping properties, increased wet grip and continued durability. The compound for hardcore use in enduro and downhill.

● Speed

● Mid

● Soft

● Ultra soft



OPTIMIZED LABEL STRUCTURE AND NEW LOOK



★ **SCHWALBE TRAIL** *MAGIC MARY — TLR — 29x2.40*
SOFT

★ **SCHWALBE** *NOBBY NIC*
TUBE TYPE — 29x2.25

The labels not only feature the new **Schwalbe-Look**, but have also been adjusted in terms of **size and the order** of the individual information:

Version of the construction (+ PRO) Model name Variant Size

★ **SCHWALBE GRAVITY PRO** *MAGIC MARY — TLR — 29x2.50*
ULTRA SOFT — RADIAL

Compound Radial

- The respective **version** will be listed first for example, Schwalbe Gravity, Schwalbe Trail or simply Schwalbe
- This is followed by the blue **PRO** designation (if it is a PRO version)
- This is followed by the respective **model name**, e.g. Magic Mary

- Information about the **variant** follows: Tube Type or TLR (Tubeless Ready), the respective **size** and the **compound**
- Finally, there is information about **radial tires** - provided that it is a radial tire

RADIAL REVOLUTION: REDEFINING MTB TIRES

THE LATEST DEVELOPMENT FROM THE SCHWALBE LAB

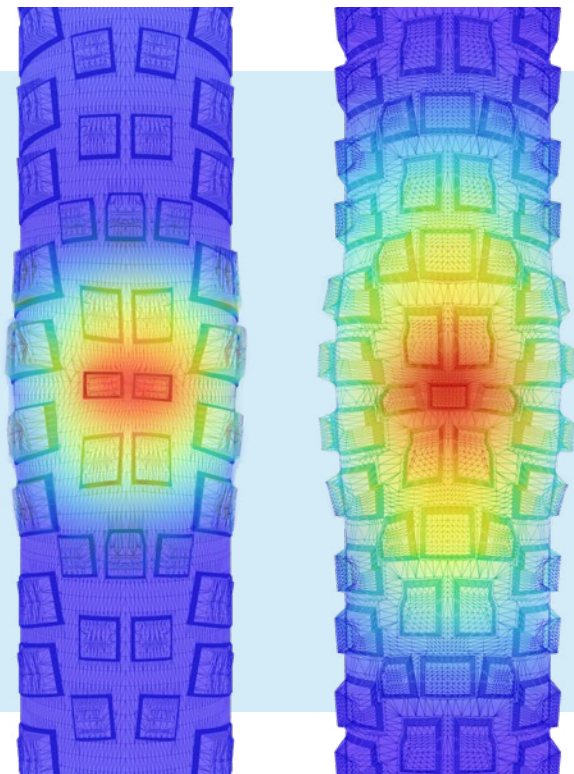
We have developed MTB tires with radial tire technology especially for the Downhill World Cup - an innovation that has never been seen before in MTB bicycle tires! The basis for this new technology is the completely rethought carcass construction.

Amaury Pierron made a brilliant comeback after his return. With our radial tires, he won in Val di Sole by almost 5 seconds and in Les Gets by over 6 seconds - an eternity in racing.



MAGIC MARY
Standard

ALBERT
Radial

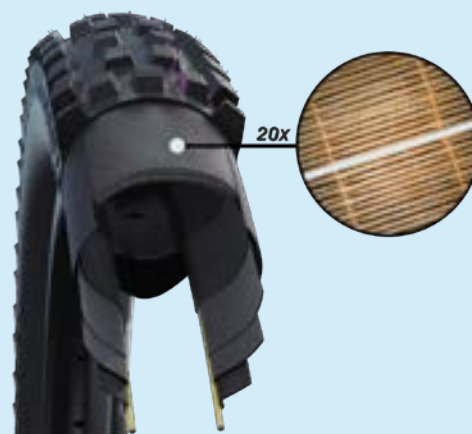


ADVANTAGES

- Carcass threads at a more obtuse angle than other tires
- 30% more contact patch area with the same air pressure
- More grip, more damping, more safety



Bigger contact patch thanks to the less acute angle arrangement of the carcass threads: more grip, more cushioning, more safety.



WHAT DOES RADIAL MEAN?

THE STRUCTURE OF RADIAL TIRES

With our radial tires, we are turning the MTB world on its head. We have always asked ourselves the following question during development: How can we make the best possible use of the limited contact patch area of a tire? Our answer: a new carcass construction! The carcass threads, which run diagonally across the tire at a 45° angle in conventional bicycle tires, are arranged at a much more obtuse angle in our radial tires. This technology opens up completely new dimensions in the function of bicycle tires.

POINT DEFORMATION

The carcass material overlaps for a shorter time and with less tension. As a result, the tire deforms more selectively and can react much more flexibly and adaptably to bumps without sacrificing the grip safety factor.

HIGHER CONTACT SURFACE

Radial tires offer approx. 30% more contact patch area than conventional tires at the same air pressure. Even if the air pressure is increased by 50%, the contact patch area is still 15% larger.

MORE GRIP, MORE DAMPING, MORE OF THE TRAIL

The increased contact patch area and more flexible response provide significantly more grip, more damping, more safety and more comfort – so you get more out of the trail! The tire absorbs impacts better and uses the suspension travel more effectively – it literally sucks itself into the ground. This applies to both mountain bikes and e-MTBs, which have significantly more traction on the ground with radial technology.





NEW

ROMY

The new trail tire for maximum fun, more grip and control



- The trail tire for maximum riding fun, uphill and downhill
- Makes MTB tire selection easy: for trail, all-mountain or light e-bikes
- Aggressive shoulder lugs for more grip in corners and maximum control
- Tight center tread for good rolling behavior and high durability
- Lighter than many enduro tires, yet extremely robust and durable
- First tire with a radial version available in 2.4 inches
- Made with recycled Carbon Black (rCB) from our own Schwalbe tire recycling

PRO, FOLDING - HS646

	ETRTO	SIZE	VERSION	COMP.	SEAL	E-BIKE	COLOUR	BAR/PSI	G	LOAD	ART. #	EUR
27.5"	62-584	27.5x2.40	GRAVITY PRO	●	TLR	E-50	Black	max. 2.5/35	1155	115 kg	11654706	74,90
	62-584	27.5x2.40	TRAIL PRO	●	TLR	E-50	Black	max. 2.5/35	990	115 kg	11654711	69,90
	63-584	27.5x2.50	GRAVITY PRO, Radial	●	TLR	E-50	Black	max. 2.5/35	1275	115 kg	11654709	79,90
	63-584	27.5x2.50	TRAIL PRO, Radial	●	TLR	E-50	Black	max. 2.5/35	1065	125 kg	11654714	74,90
	63-584	27.5x2.50	TRAIL PRO, Radial	●	TLR	E-50	Black	max. 2.5/35	1065	115 kg	11654715	74,90
29"	62-622	29x2.40	GRAVITY PRO	●	TLR	E-50	Black	max. 2.5/35	1230	115 kg	11654707	74,90
	62-622	29x2.40	RACE PRO	●	TLR	E-50	Black	max. 2.5/35	970	115 kg	11654710	69,90
	62-622	29x2.40	TRAIL PRO	●	TLR	E-50	Black	max. 2.5/35	1050	125 kg	11654712	69,90
	62-622	29x2.40	TRAIL PRO	●	TLR	E-50	Black	max. 2.5/35	1050	125 kg	11654713	69,90
	62-622	29x2.40	TRAIL PRO, Radial	●	TLR	E-50	Black	max. 2.5/35	1050	125 kg	11654752	74,90
	63-622	29x2.50	GRAVITY PRO, Radial	●	TLR	E-50	Black	max. 2.5/35	1355	115 kg	11654708	79,90
	63-622	29x2.50	TRAIL PRO, Radial	●	TLR	E-50	Black	max. 2.5/35	1130	125 kg	11654716	74,90
	63-622	29x2.50	TRAIL PRO, Radial	●	TLR	E-50	Black	max. 2.5/35	1130	125 kg	11654717	74,90

COMPOUND ● Soft ● Mid

FOLDING - HS646

	ETRTO	SIZE	VERSION	COMP.	SEAL	E-BIKE	COLOUR	BAR/PSI	G	LOAD	ART. #	EUR
27.5"	62-584	27.5x2.40	TRAIL	●	TLR	E-50	Black	max. 2.5/35	1005	115 kg	11654718	44,90
29"	62-622	29x2.40	TRAIL	●	TLR	E-50	Black	max. 2.5/35	1070	115 kg	11654719	44,90

COMPOUND ● Mid



MAGIC MARY

The legendary downhill and enduro tire



- Now with new label design
- With new carcass constructions and the new Ultra Soft compound
- Additional radial versions due to huge demand
- Radial sizes 63-584 and 63-622 now with smooth sidewall while maintaining performance and sidewall protection
- Made with recycled Carbon Black (rCB) from our own Schwalbe tire recycling (does not apply to the Ultra Soft Compound)



PRO, FOLDING - HS447

	ETRTO	SIZE	VERSION	COMP.	SEAL	E-BIKE	COLOUR	BAR/PSI	G	LOAD	ART. #	EUR
26"	60-559	26x2.35	TRAIL PRO	●	TLR	E-25	Black	1.6-3.5/23-50	1025	115 kg	11600538.04	69,90
27.5"	62-584	27.5x2.40	GRAVITY PRO	●	TLR	E-50	Black	max. 3.5/50	1255	115 kg	11600511.04	74,90
	62-584	27.5x2.40	GRAVITY PRO	●	TLR	E-50	Black	max. 3.5/50	1255	115 kg	11600537.04	74,90
	62-584	27.5x2.40	TRAIL PRO	●	TLR	E-50	Black	max. 3.5/50	1085	115 kg	11600539.04	69,90
	62-584	27.5x2.40	TRAIL PRO	●	TLR	E-50	Black	max. 3.5/50	1085	115 kg	11654278.01	69,90
	63-584	27.5x2.50	GRAVITY PRO , Radial	●	TLR	E-50	Black	max. 2.5/35	1325	115 kg	11654599.01	79,90
	63-584	27.5x2.50	TRAIL PRO , Radial	●	TLR	E-50	Black	max. 2.5/35	1120	115 kg	11654686	74,90
	65-584	27.5x2.60	TRAIL PRO	●	TLR	E-25	Black	1.2-2.6/17-38	1115	115 kg	11601010.02	69,90
	65-584	27.5x2.60	GRAVITY PRO	●	TLR	E-25	Black	1.2-2.6/17-38	1290	115 kg	11601051.03	74,90
	70-584	27.5x2.80	TRAIL PRO	●	TLR	E-25	Black	1.2-2.6/17-38	1200	120 kg	11601012.02	69,90
29"	57-622	29x2.25	TRAIL PRO	●	TLR	E-25	Black	1.7-3.8/24-55	1040	110 kg	11601026.02	69,90
	62-622	29x2.40	GRAVITY PRO	●	TLR	E-50	Black	max. 3.5/50	1340	125 kg	11600615.04	74,90
	62-622	29x2.40	TRAIL PRO	●	TLR	E-50	Black	max. 3.5/50	1155	125 kg	11600616.04	69,90
	62-622	29x2.40	GRAVITY PRO	●	TLR	E-50	Black	max. 3.5/50	1340	125 kg	11654090.02	74,90
	62-622	29x2.40	TRAIL PRO	●	TLR	E-50	Black	max. 3.5/50	1155	125 kg	11654279.01	69,90
	62-622	29x2.40	GRAVITY PRO	●	TLR	E-50	Bronze Sidewall	max. 3.5/50	1340	125 kg	11654382.01	74,90
	63-622	29x2.50	TRAIL PRO , Radial	●	TLR	E-50	Black	max. 2.5/35	1190	115 kg	11654597.01	74,90
	63-622	29x2.50	GRAVITY PRO , Radial	●	TLR	E-50	Black	max. 2.5/35	1410	115 kg	11654598.01	79,90
	63-622	29x2.50	GRAVITY PRO , Radial	●	TLR	E-50	Black	max. 2.5/35	1410	115 kg	11654684	79,90
	63-622	29x2.50	TRAIL PRO , Radial	●	TLR	E-50	Black	max. 2.5/35	1190	115 kg	11654685	74,90
	65-622	29x2.60	TRAIL PRO	●	TLR	E-25	Black	1.2-2.6/17-38	1185	115 kg	11601102.02	69,90
	65-622	29x2.60	GRAVITY PRO	●	TLR	E-25	Black	1.2-2.6/17-38	1375	115 kg	11654048.02	74,90
65-622	29x2.60	TRAIL PRO	●	TLR	E-25	Black	1.2-2.6/17-38	1185	115 kg	11654457.01	69,90	

COMPOUND ● Ultra Soft ● Soft

FOLDING - HS447

	ETRTO	SIZE	VERSION	COMP.	SEAL	E-BIKE	COLOUR	BAR/PSI	G	LOAD	ART. #	EUR
26"	60-559	26x2.35	GRAVITY	●	TLR	E-25	Black	1.6-3.5/23-50	1300	115 kg	11654687	49,90
27.5"	62-584	27.5x2.40	TRAIL	●	TLR	E-50	Black	max. 3.5/50	1125	125 kg	11654528.01	44,90
	62-584	27.5x2.40	GRAVITY	●	TLR	E-50	Black	max. 3.5/50	1365	115 kg	11654688	49,90
29"	62-622	29x2.40	TRAIL	●	TLR	E-50	Black	max. 3.5/50	1200	125 kg	11654527.01	44,90
	62-622	29x2.40	GRAVITY	●	TLR	E-50	Black	max. 3.5/50	1455	125 kg	11654689	49,90

COMPOUND ● Soft

TACKY CHAN

The fastest downhill tire in the world



- Now with a new label design
- New variants and sizes to replace Big Betty
- New size: 2.5" - exclusively with radial carcass
- Profile optimized for radial tires: New 2-2 distribution of profile blocks for even more controlled handling, closed transition area for smoother steering, increased braking traction
- Made with recycled Carbon Black (rCB) from our own Schwalbe tire recycling (does not apply to the Ultra Soft Compound)



PRO, FOLDING - HS625

	ETRTO	SIZE	VERSION	COMP.	SEAL	E-BIKE	COLOUR	BAR/PSI	G	LOAD	ART. #	EUR
27.5"	62-584	27.5x2.40	TRAIL PRO	●	TLR	E-50	Black	max. 3.5/50	1040	125 kg	11654535.01	69,90
	62-584	27.5x2.40	GRAVITY PRO	●	TLR	E-50	Black	max. 3.5/50	1210	125 kg	11654536.01	74,90
	62-584	27.5x2.40	GRAVITY PRO	●	TLR	E-50	Black	max. 3.5/50	1210	125 kg	11654741	74,90
	63-584	27.5x2.50	GRAVITY PRO, Radial	●	TLR	E-50	Black	max. 2.5/35	1310	115 kg	11654694	79,90
	63-584	27.5x2.50	GRAVITY PRO, Radial	●	TLR	E-50	Black	max. 2.5/35	1310	115 kg	11654695	79,90
	63-584	27.5x2.50	TRAIL PRO, Radial	●	TLR	E-50	Black	max. 2.5/35	1100	115 kg	11654698	74,90
29"	63-584	27.5x2.50	TRAIL PRO, Radial	●	TLR	E-50	Black	max. 2.5/35	1100	115 kg	11654699	74,90
	62-622	29x2.40	TRAIL PRO	●	TLR	E-50	Black	max. 3.5/50	1105	125 kg	11654531.01	69,90
	62-622	29x2.40	TRAIL PRO	●	TLR	E-50	Black	max. 3.5/50	1105	125 kg	11654532.01	69,90
	62-622	29x2.40	GRAVITY PRO	●	TLR	E-50	Black	max. 3.5/50	1285	125 kg	11654533.01	74,90
	62-622	29x2.40	GRAVITY PRO	●	TLR	E-50	Black	max. 3.5/50	1285	125 kg	11654534.01	74,90
	62-622	29x2.40	RACE PRO	●	TLR	E-50	Black	max. 3.5/50	1025	125 kg	11654544.01	69,90
	63-622	29x2.50	GRAVITY PRO, Radial	●	TLR	E-50	Black	max. 2.5/35	1395	115 kg	11654696	79,90
	63-622	29x2.50	GRAVITY PRO, Radial	●	TLR	E-50	Black	max. 2.5/35	1395	115 kg	11654697	79,90
	63-622	29x2.50	TRAIL PRO, Radial	●	TLR	E-50	Black	max. 2.5/35	1170	115 kg	11654700	74,90
	63-622	29x2.50	TRAIL PRO, Radial	●	TLR	E-50	Black	max. 2.5/35	1170	115 kg	11654701	74,90

COMPOUND ● Ultra Soft ● Soft

FOLDING - HS625

	ETRTO	SIZE	VERSION	COMP.	SEAL	E-BIKE	COLOUR	BAR/PSI	G	LOAD	ART. #	EUR
27.5"	62-584	27.5x2.40	GRAVITY	●	TLR	E-50	Black	max. 3.5/50	1310	115 kg	11654702	49,90
	62-584	27.5x2.40	TRAIL	●	TLR	E-50	Black	max. 3.5/50	1070	125 kg	11654704	44,90
29"	62-622	29x2.40	GRAVITY	●	TLR	E-50	Black	max. 3.5/50	1395	115 kg	11654703	49,90
	62-622	29x2.40	TRAIL	●	TLR	E-50	Black	max. 3.5/50	1140	125 kg	11654705	44,90

COMPOUND ● Soft

SHREDDA F

Ultimate grip on loose surfaces



- Renaming Shredda Front to Shredda F in order to make the use of the tread pattern less restrictive
- Now with a new label design and the new Ultra Soft compound
- Thanks to the radial carcass, more grip, more comfort and more safety
- Profile optimized for radial carcass: Open tread design with high tread depth for excellent interlocking, especially on soft surfaces



PRO, FOLDING - HS638

	ETRTO	SIZE	VERSION	COMP.	SEAL	E-BIKE	COLOUR	BAR/PSI	G	LOAD	ART. #	EUR
29"	64-622	29x2.50	GRAVITY PRO, Radial	●	TLR	E-50	Black	max. 2.6/38	1530	115 kg	11654553.01	79,90

COMPOUND ● Ultra Soft

SHREDDA R

Ultimate grip on loose surfaces



- Renaming Shredda Rear to Shredda R in order to make the use of the tread pattern less restrictive
- Now with a new label design and the new Ultra Soft compound
- Thanks to the radial carcass, more grip, more comfort and more safety
- Slightly lower tread depth than Shredda F, but with more stability
- Tread optimized for radial carcass: Open tread design with scooping effect and high tread depth for excellent engagement
- Generates a lot of braking and propulsion traction, especially on soft surfaces



PRO, FOLDING - HS639

	ETRTO	SIZE	VERSION	COMP.	SEAL	E-BIKE	COLOUR	BAR/PSI	G	LOAD	ART. #	EUR
27.5"	64-584	27.5x2.50	GRAVITY PRO, Radial	●	TLR	E-50	Black	max. 2.6/38	1465	115 kg	11654555.01	79,90
29"	64-622	29x2.50	GRAVITY PRO, Radial	●	TLR	E-50	Black	max. 2.6/38	1560	115 kg	11654554.01	79,90

COMPOUND ● Ultra Soft

ALBERT

Guarantees safety and control in all situations



- Now with a new label design
- With new versions and the new Ultra Soft compound
- Thanks to the radial carcass, more grip, more comfort and more safety
- Literally clings to the ground as the tire deforms more precisely
- Tread optimized for radial carcass: Many lugs for maximum control and good durability
- Made with recycled Carbon Black (rCB) from our own Schwalbe tire recycling (does not apply to the Ultra Soft Compound)



PRO, FOLDING - HS641

	ETRTO	SIZE	VERSION	COMP.	SEAL	E-BIKE	COLOUR	BAR/PSI	G	LOAD	ART. #	EUR
27.5"	63-584	27.5x2.50	GRAVITY PRO, Radial	●	TLR	E-50	Black	max. 2.6/38	1310	115 kg	11654594.01	79,90
	63-584	27.5x2.50	TRAIL PRO, Radial	●	TLR	E-50	Black	max. 2.6/38	1100	115 kg	11654595.01	74,90
	63-584	27.5x2.50	TRAIL PRO, Radial	●	TLR	E-50	Black	max. 2.6/38	1100	115 kg	11654605.01	74,90
	63-584	27.5x2.50	GRAVITY PRO, Radial	●	TLR	E-50	Black	max. 2.6/38	1310	115 kg	11654681	79,90
	65-584	27.5x2.60	GRAVITY PRO, Radial	●	TLR	E-50	Black	max. 2.6/38	1340	115 kg	11654596.01	79,90
29"	63-622	29x2.50	GRAVITY PRO, Radial	●	TLR	E-50	Black	max. 2.6/38	1395	115 kg	11654589.01	79,90
	63-622	29x2.50	TRAIL PRO, Radial	●	TLR	E-50	Black	max. 2.6/38	1170	115 kg	11654590.01	74,90
	63-622	29x2.50	GRAVITY PRO, Radial	●	TLR	E-50	Black	max. 2.6/38	1395	115 kg	11654591.01	79,90
	63-622	29x2.50	TRAIL PRO, Radial	●	TLR	E-50	Black	max. 2.6/38	1170	115 kg	11654604.01	74,90
	65-622	29x2.60	GRAVITY PRO, Radial	●	TLR	E-50	Black	max. 2.6/38	1425	115 kg	11654592.01	79,90
	65-622	29x2.60	GRAVITY PRO, Radial	●	TLR	E-50	Black	max. 2.6/38	1425	115 kg	11654593.01	79,90
	65-622	29x2.60	TRAIL PRO, Radial	●	TLR	E-50	Black	max. 2.6/38	1195	115 kg	11654610.01	74,90
	65-622	29x2.60	TRAIL PRO, Radial	●	TLR	E-50	Black	max. 2.6/38	1195	115 kg	11654611.01	74,90

COMPOUND ● Ultra Soft ● Soft

EDDY CURRENT

The "indestructible" tire for E-MTB



- Now with new label design
- Only rear remains in two sizes in radial version
- "Rear" designation will be dropped, as only one variant is available (64 mm instead of 65 mm previously)
- Made with recycled Carbon Black (rCB) from our own Schwalbe tire recycling

PRO, FOLDING - HS497

	ETRTO	SIZE	VERSION	COMP.	SEAL	E-BIKE	COLOUR	BAR/PSI	G	LOAD	ART. #	EUR
27.5"	64-584	27.5x2.50	GRAVITY PRO, Radial	●	TLR	E-50	Black	max. 2.5/35	1390	115 kg	11654682	79,90
29"	64-622	29x2.50	GRAVITY PRO, Radial	●	TLR	E-50	Black	max. 2.5/35	1480	115 kg	11654683	79,90

COMPOUND ● Soft

NOBBY NIC

The all-rounder (for trail, all-mountain, and enduro bikes)



Applies to PRO version

- Focus on entry-level: now only a few variants in TRAIL PRO
- ROMY as a perfect alternative
- Now only available as a wired version with Tube Type or folding tire as TLR version
- Made with recycled Carbon Black (rCB) from our own Schwalbe tire recycling



PRO, FOLDING - HS602

	ETRTO	SIZE	VERSION	COMP.	SEAL	E-BIKE	COLOUR	BAR/PSI	G	LOAD	ART. #	EUR
27.5"	65-584	27.5x2.60	TRAIL PRO	●	TLR	E-50	Black	max. 3.0/45	1005	115 kg	11654114.01	69,90
	70-584	27.5x2.80	TRAIL PRO	●	TLR	E-25	Black	max. 2.6/38	1090	120 kg	11654116.01	69,90
29"	62-622	29x2.40	TRAIL PRO	●	TLR	E-50	Black	max. 3.5/50	955	125 kg	11654142.02	69,90
	65-622	29x2.60	TRAIL PRO	●	TLR	E-50	Black	max. 3.0/45	1070	115 kg	11654115.01	69,90

COMPOUND ● Mid

FOLDING - HS602

	ETRTO	SIZE	VERSION	COMP.	SEAL	E-BIKE	COLOUR	BAR/PSI	G	LOAD	ART. #	EUR
26"	57-559	26x2.25	SCHWALBE	●	TLR	E-50	Black	max. 3.7/54	795	110 kg	11654127.01	39,90
	62-559	26x2.40	SCHWALBE	●	TLR	E-50	Black	max. 3.5/50	885	115 kg	11654130.02	39,90
27.5"	57-584	27.5x2.25	SCHWALBE	●	TLR	E-50	Black	max. 3.7/54	840	110 kg	11654128.01	39,90
	62-584	27.5x2.40	SCHWALBE	●	TLR	E-50	Black	max. 3.5/50	920	115 kg	11654131.02	39,90
	62-584	27.5x2.40	SCHWALBE	●	TLR	E-50	Bronze	max. 3.5/50	920	115 kg	11654690	39,90
	65-584	27.5x2.60	SCHWALBE	●	TLR	E-50	Black	max. 3.5/50	1015	125 kg	11654691	39,90
	70-584	27.5x2.80	SCHWALBE	●	TLR	E-25	Black	max. 3.5/50	1090	125 kg	11654693	39,90
29"	57-622	29x2.25	SCHWALBE	●	TLR	E-50	Black	max. 3.7/54	895	120 kg	11654129.01	39,90
	62-622	29x2.40	SCHWALBE	●	TLR	E-50	Black	max. 3.5/50	980	125 kg	11654132.02	39,90
	65-622	29x2.60	SCHWALBE	●	TLR	E-50	Black	max. 3.5/50	1080	125 kg	11654692	39,90

COMPOUND ● ADDIX Green

WIRED - HS602

	ETRTO	SIZE	VERSION	COMP.	SEAL	E-BIKE	COLOUR	BAR/PSI	G	LOAD	ART. #	EUR
26"	57-559	26x2.25	SCHWALBE	●	Tube	E-50	Black	max. 3.7/54	710	110 kg	11159128.02	29,90
27.5"	57-584	27.5x2.25	SCHWALBE	●	Tube	E-50	Black	max. 3.7/54	740	110 kg	11159129.02	29,90
29"	57-622	29x2.25	SCHWALBE	●	Tube	E-50	Black	max. 3.7/54	790	120 kg	11159130.02	29,90

COMPOUND ● ADDIX Green

RICK

The perfect choice for XC races where every tenth of a second counts



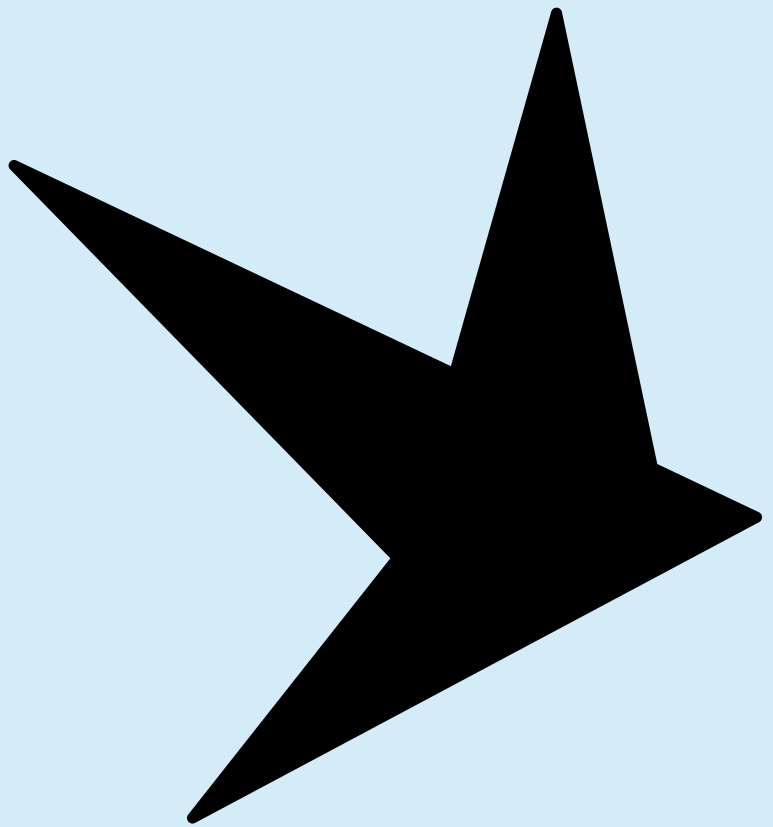
- An additional variant: XC [PRO](#)
- 29x2.4 inches with Addix Speed and black sidewall
- Made with recycled Carbon Black (rCB) from our own Schwalbe tire recycling



PRO, FOLDING - HS635

	ETRTO	SIZE	VERSION	COMP.	SEAL	E-BIKE	COLOUR	BAR/PSI	G	LOAD	ART. #	EUR
29"	62-622	29x2.40	XC PRO	●	TLR	E-50	Black	max. 3.5/50	760	125 kg	11654672	69,90

COMPOUND ● Speed



Schwalbe Headquarters
Ralf Bohle GmbH
51580 Reichshof
Germany
T +49 2265 109-0
www.schwalbe.com

Schwalbe Benelux B.V.
2132 PX Hoofddorp
T +31 23 5555265
www.schwalbe.nl

Schwalbe Tyres UK Ltd.
Shropshire TF1 7ET
T +44 1952 602680
www.schwalbe.com

Schwalbe North America
Ferndale, WA
T +1 888 700 5860
www.schwalbetires.com

Schwalbe France Sarl
38510 Morestel
T +33 4 74805842
www.schwalbe.fr

Schwalbe Italia S.R.L.
20864 Agrate Brianza (MB)
T +39 039 6058078
www.schwalbe.it

Follow us on:
facebook.com/schwalbetires
instagram.com/schwalbetires

SCHWALBE 